



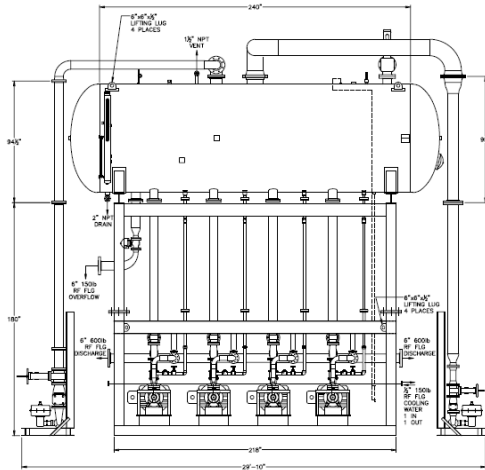
Rentals • Sales • Leasing
24/7 • (800) 227-1966

225,000 lbs/hr Deaerating Boiler Feedwater System

Nationwide Boiler's 225,000 lb/hr, 50 psig design pressure deaerator is complete with feedwater pumps and is fully piped and wired. It includes the following trim:

- Control Panel
- Water Level Gauge Glasses
- Low and High Water Level Switches
- Steam Pressure Controller w/ 3" Cashco Ranger Steam Pressure Control Valve
- Make-up Water Level Controller w/ 3" Cashco Ranger Make-up Water Control Valve
- Temperature Gauge
- 8"-125# Safety Relief Valve (set at 50 psig)
- 1" Kunkle Sentinel Relief Valve (set at 20 psig)
- Overflow Control
- Vacuum Breaker
- Motor Starters (installed & wired)
- Feedwater Pumps (4 total):

| | |
|----------------------|--------------|
| Carver Pump | Multi-Stage |
| Capacity | 175 gpm each |
| Total Discharge Head | 1843 Ft. |



Storage Capacity: 4,000 gallons (8.9 minutes)
 Steam Requirements: 33,000 lbs/hr @ 150 psig

Connection Sizes:

Deaerator Steam Supply: 4"-300# FLG
 Make-up Water: 6"-125# FLG
 Condensate: 6"-125# FLG
 Overflow: 6"-150# FLG
 Drain: 2" NPT
 Cooling Water Inlet: 1/2"-150# FLG
 Cooling Water Outlet: 1/2"-150# FLG
 Instrument Air: 1/4" NPT
 Feedwater Discharge: 6"-600# FLG

Electrical Power Requirements:

480 VAC, 3 ph, 60 Hz., 700 amps

Dimensions & Weights:

| | |
|-----------------------------|------------------------------|
| Shipping Height: 8' | Assembled Height: 26'-3" |
| Shipping Length: 29'-10" | Assembled Length: 29'-10" |
| Shipping Width: 9'- 8" | Assembled Width: 9'- 8" |
| Shipping Weight: 48,500 lbs | Operating Weight: 76,850 lbs |
| Shipping Loads: 2 | Flooded Weight: 93,500 lbs |

*note: shipped knock-down for field installation & assembly.

Ask About Our **Green Solutions**



42400 Christy Street / Fremont, CA 94538 / (510) 490-7100 / www.nationwideboiler.com / info@nationwideboiler.com

True Nationwide Coverage & Beyond. Representatives Located Worldwide.

* Actual Equipment may differ from listed specification. Please consult Nationwide Boiler Inc. for additional details.