

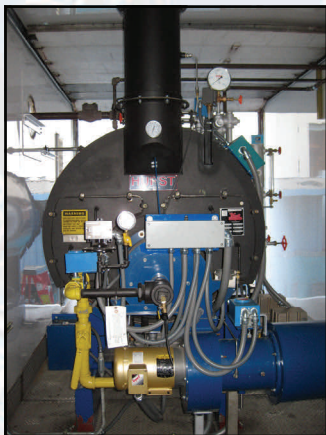


**Rentals • Sales • Service**  
**24/7 • (800) 227-1966**

**47.5 HP**  
**Ultra Low NOx, 200 psig**  
**Mobile Boiler Room**

Nationwide Boiler's ultra low NOx, 47.5 hp (1,640 lbs/hr) Mobile Boiler Room is an enclosed van unit, designed at 200 psig pressure, firing natural gas (LPG is optional). It is fully piped and wired and includes the following components:

- 47.5 hp Package Firetube Boiler
- Ultra Low NOx Burner
- Gas Pressure Regulator
- Control Panel
- Valve Trim (headers, safeties, blowdown, etc.)
- Duplex Feedwater System w/ Condensate Return Tank & Preheater
- Duplex Water Softener
- Chemical Feed System
- Blowdown Separator
- Sample Cooler
- Interior Lighting
- Stack
- Operating Manuals



**Fuel Consumption:**

Natural Gas: 1,988 SCFH @ 3-9 psig  
 LPG: 22 GPH

**Connection Sizes:**

Main Steam: 2"-250# FLG HP / 4" NPT LP  
 Natural Gas: 2"-150# FLG  
 Blowdown / Drain: 4"-150# FLG  
 Condensate Return: 1" NPT  
 Make-up Water: 1" NPT

**Electrical Power Service Requirements:**

480 VAC, 3 ph, 60 hz, 100 AMPS

**Dimensions & Weights:**

Length: 28' 0"  
 Width: 8' 6"  
 Height: 13' 4"  
 Shipping Weight: 19,000 lbs  
 Operating Weight: 24,000 lbs

**Emissions Data (natural gas):**

NOx (corr. to 3% O<sub>2</sub>): 9 ppm  
 CO (corr. to 3% O<sub>2</sub>): 50 ppm

Ask About Our **Green Solutions**



42400 Christy Street / Fremont, CA 94538 / (510) 490-7100 / [www.nationwideboiler.com](http://www.nationwideboiler.com) / [info@nationwideboiler.com](mailto:info@nationwideboiler.com)  
 True Nationwide Coverage & Beyond. Representatives Located Worldwide.

\* Actual equipment may differ from listed specification. Please consult Nationwide Boiler Inc. for additional details.