

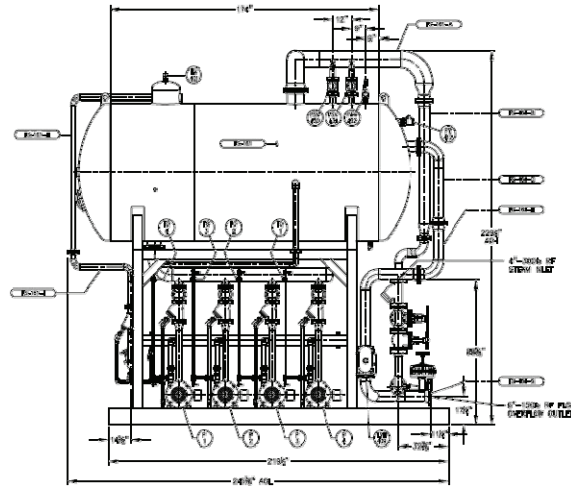


Rentals • Sales • Service
24/7 • (800) 227-1966

150,000 lbs/hr Deaerating Boiler Feedwater System

Nationwide Boiler's skid-mounted 150,000 lb/hr spray type deaerator with 3,125 gallons of storage (10 minutes), and guaranteed oxygen concentrations not to exceed .005cc/ltr., including but not limited to the following:

- Design Pressure of 50 psig
- Pneumatic Level Controller
- Pneumatic Make Up Water Valve with 3-valve By-pass (mounted)
- High and Low Water Alarms and Low Water Cutout for feedwater pump protection
- Three (3) Safety Relief Valves
- Overflow Drain Valve
- Water Level Gauge Glass and Cocks
- Dial Thermometer and Pressure Gauge
- Four (4) Goulds Feedwater Pumps, 50 HP each, 480V Motors, Pre-piped and Wired



Connection Sizes:

Cold Water Make-up:	3" 150# RF FLG
Condensate Return:	4" 150# RF FLG
Steam Inlet:	4" 300# RF FLG
Feedwater Discharge:	6" 300# RF FLG (2 connection points)
Overflow / Drain Header:	2" 150# RF FLG
Instrument Air:	1/4" NPT
Drain:	2" 150# RF FLG
Pump Capacity:	125 gpm @ 440 psig

Electrical Power Requirements:

Main Disconnect:	480 VAC, 60 hz, 3 ph, 400 amp
Feedwater Pump(s):	480 VAC, 60 hz, 3 ph, 59 amp ea.
Controls:	110V step-down transformer included / prewired

Dimensions & Weights:

Length:	20' 0"
Width:	8' 0"
Height:	19' 0"
Shipping:	40,000 lbs (approx) (2 piece shipment with some loose piping)
Operating:	67,500 lbs (approx)

Ask About Our **Green Solutions**



42400 Christy Street / Fremont, CA 94538 / (510) 490-7100 / www.nationwideboiler.com / info@nationwideboiler.com
 True Nationwide Coverage & Beyond. Representatives Located Worldwide.

* Actual equipment may differ from listed specification. Please consult Nationwide Boiler Inc. for additional details.