



Rentals • Sales • Leasing
24/7 • (800) 227-1966

75,000 pph Low NOx, 750 psig Skid-Mounted Package Boiler

Nationwide Boiler's low NOx, 75,000 pph, 750 psig design (250 - 650 psig operating) saturated steam, skid-mounted O type package Babcock & Wilcox watertube boiler is set to burn natural gas or #2 oil. It is fully piped and wired and includes the following components:

- Low NOx Burner
- EconoStak Economizer
- Burner Management System
- Parallel Positioning Combustion Controls
- Forced Draft Fan, Motor & Starter
- Complete Fuel Train & Pilot Ignition System
- Water Column & Site Glass
- Steam Pressure Gauge
- Low-water Cutoffs
- Safety Valves
- Feedwater Control, Stop & Check Valves
- Blowdown Valves
- Continuous Blowdown Metering Valve
- Chemical Feed Valve
- Steam Non-return Valve (loose)
- Stack (loose)
- NEMA 4 Electrical Enclosures
- Low NOx CataStak™ SCR System (**optional**)
- Weatherproofed (except for freezing)
- Meets FM, NFPA 85 & IRI Insurance Standards
- Operating Manuals with Drawings



Fuel Consumption:

Natural Gas: 94,000 SCFH

Connection Sizes:

Main Steam: 8"-600# FLG
 Natural Gas: 4"-150# FLG
 Feedwater: 2½"-600# FLG
 Bottom Blowdown: 1½"-600# FLG
 Continuous Blowdown: ¾" NPT
 Chemical Feed: ½" NPT
 Instrument Air: ½" NPT
 Water Column Drain: ¾" NPT

Electrical Power Service Requirements:

480 VAC, 3 ph, 60 hz, 250 AMPS

Boiler Base Dimensions & Weights:

Length / Width / Height: 24' 0" / 10' 0" / 14' 0"
 Shipping Weight: 106,600 lbs
 Operating Weight: 150,600 lbs

Emissions Data (natural gas):

NOx (corr. to 3% O₂): 30 ppm
 CO (corr. to 3% O₂): 50 ppm

Ask About Our **Green Solutions**



42400 Christy Street / Fremont, CA 94538 / (510) 490-7100 / www.nationwideboiler.com / info@nationwideboiler.com
 True Nationwide Coverage & Beyond. Representatives Located Worldwide.

* Actual Equipment may differ from listed specification. Please consult Nationwide Boiler Inc. for additional details.

PREDICTED BOILER EMISSION DATA

NATURAL GAS FIRING

| | | |
|-------------------------------------|-------------------------|----------------|
| NBI MODEL NO | 75-B&W-O-750 SAT | |
| BOILER MFG AND MODEL | BABCOCK & WILCOX FMO-66 | |
| BURNER MFG AND MODEL | FABER WB-1-31 | |
| BOILER CAPACITY | 75,000 | |
| DESIGN PRESSURE, PSIG | 750 | |
| OPERATING PRESURE, PSIG | 650 | |
| FUEL HEAT INPUT, MMBTU | 94.0 | |
| FUEL FLOW, SCFH | 94,000 | |
| FLUE GAS OUTLET TEMP, DEG F | 390 | |
| FLUE GAS FLOW, LB/HR | 82,460 | |
| FLUE GAS SPECIFIC VOLUME, CF/LB | 22.3 | |
| STACK OUTLET DIA., IN | 42 | |
| STACK OUTLET FLOW AREA, SQ FT | 9.6 | |
| STACK GAS EXIT VELOCITY, FPM | 3,190 | |
| STACK GAS EXIT FLOW, ACFM | 30,845 | |
| | PPMVD | #/MMBTU |
| NO _x @ 3% O ₂ | 30 | 0.036 |
| CO @ 3% O ₂ | 50 | 0.037 |
| VOC @ 3% O ₂ | 10 | 0.004 |
| PM10 @ 3% O ₂ | - | 0.010 |
| EXCESS AIR, % | 15 | 15 |

DATE: 3/31/15

NATIONWIDE BOILER INCORPORATED

42400 CHRISTY STREET, FREMONT, CA 94538-3141



B-695 75,000 LB/HR, 750 PSIG SATURATED

TRAILER MOUNTED BOILER

| INDEX OF DRAWINGS | | |
|-------------------|---|---------|
| B695-T-01 | TITLE SHEET, INDEX OF DRAWINGS | REV. 6 |
| B695-G-02 | GENERAL ARRANGEMENT, 2 SHEETS | REV. 4 |
| B695-L-03 | MECHANICAL LEGENDS | REV. 1 |
| B695-F-04 | PROCESS FLOW DIAGRAM | REV. 2 |
| B695-I-05 | PIPING & INSTRUMENT DIAGRAM | REV. 2 |
| B695-M-06 | BILL OF MATERIAL, 2 SHEETS | REV. 3 |
| B695-D-07 | FD FAN INLET BOX | REV. 2 |
| B695-D-08 | SHIPPING SKID, 2 SHEETS | REV. 2 |
| B0199476 | B&W BOILER GENERAL ARRANGEMENT | REV. 00 |
| B0199478 | B&W EQUIPMENT ARRANGEMENT | REV. 00 |
| D-1342011-1 | AHR ECONOMIZER GENERAL ARRANGEMENT | REV. 0 |
| 25-01-01-01 | FABER BURNER GENERAL ARRANGEMENT | REV. 00 |
| 25-08-01-01 | FABER BURNER PIPING GENERAL ARRANGEMENT | REV. 00 |

| | | | | |
|------|----------|--|--------------------------|--|
| 6 | 10/27/14 | REVISED GA AND PROCESS FLOW DIAGRAM | CONTRACT NO. B695 | Nationwide Boiler Incorporated <small>42400 Christy Street • Fremont, California 94538-3141 510/490-7100 • 800/227-1986 • FAX 510/490-0571</small> |
| 5 | 5/30/14 | REVISED AMPS ON GA | APPROVALS | |
| 4 | 04/17/13 | REPAIRED BILL OF MATERIAL AND ECONOMIZER DRAWINGS | DATE 11/11/11 | B-695 TITLE SHEET INDEX OF DRAWINGS |
| 3 | 3/8/13 | INCREASED AMP LOAD ON GA SHEET 1 | DRAWN CAO | |
| 2 | 1/13/12 | RELEASED FAN INLET BOX AND SHIPPING SKID FOR FABRICATION | DESIGN | SIZE D |
| REV. | DATE | DESCRIPTION | CHECKED | FSCM NO. |
| | | | ISSUED CAO | DWG. NO. B695-T-01 |
| | | | SCALE NONE | REV. 6 |
| | | | FILE NAME B695PACKAGE | SHEET 1 OF 1 |

TRAILER MOUNTED 75,000 LB/HR BOILER

BOILER DATA:

| | |
|----------------------------|------------------------|
| CONTINUOUS CAPACITY | — 75,000 LBS/HR |
| DESIGN PRESSURE | — 750 PSIG |
| OPERATING PRESSURE | — 150 - 675 PSIG |
| FEEDWATER TEMPERATURE | — 227°F |
| FURNACE VOLUME | — 868 CU. FT. |
| CONVECTIVE HEATING SURFACE | — 4,286 SQ. FT. (ASME) |
| RADIANT HEATING SURFACE | — 666 SQ. FT. (ASME) |
| TOTAL HEATING SURFACE | — 4,952 SQ. FT. (ASME) |

FUEL REQUIREMENTS:

NATURAL GAS

| | |
|-----------------------------|----------------------------|
| SUPPLY PRESSURE | — 15 PSIG REGULATED |
| CONSUMPTION | — 94,000 SCFH (WITH ECONO) |
| NO.2 FUEL OIL (BACK UP) | — 660 GPH (WITH ECONO) |
| ATOMIZING STEAM | — 775 LBS/HR @ 70-90 PSIG |
| ATOMIZING AIR (FOR STARTUP) | — 175 SCFM @ 100 PSIG |

EMISSIONS (NATURAL GAS):

| | |
|-----|------------------------------|
| NOx | — 25 PPM @ 3% O2 (.030#/MKB) |
| CO | — 50 PPM @ 3% O2 (.037#/MKB) |

UTILITY REQUIREMENTS:

ELECTRICAL POWER 480 VOLT AC 3PH, 60HZ, 250 AMPS
(F.D. FAN 125 HP, FUEL PUMP 5 HP SEPARATE SKID)

INSTRUMENT AIR 2 SCFM CONTINUOUS @ 80 PSIG MIN.
25 SCFM PEAK @ 80 PSIG MIN.
150 PSIG MAX. SUPPLY

SHIPPING WEIGHT:

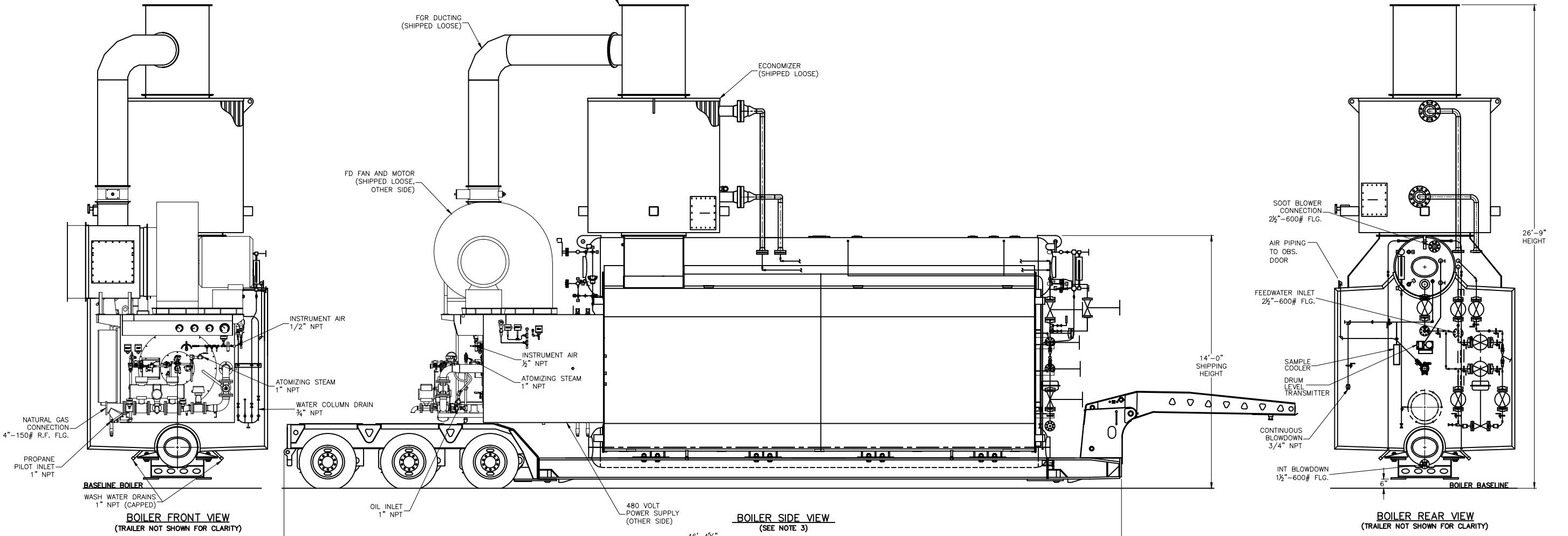
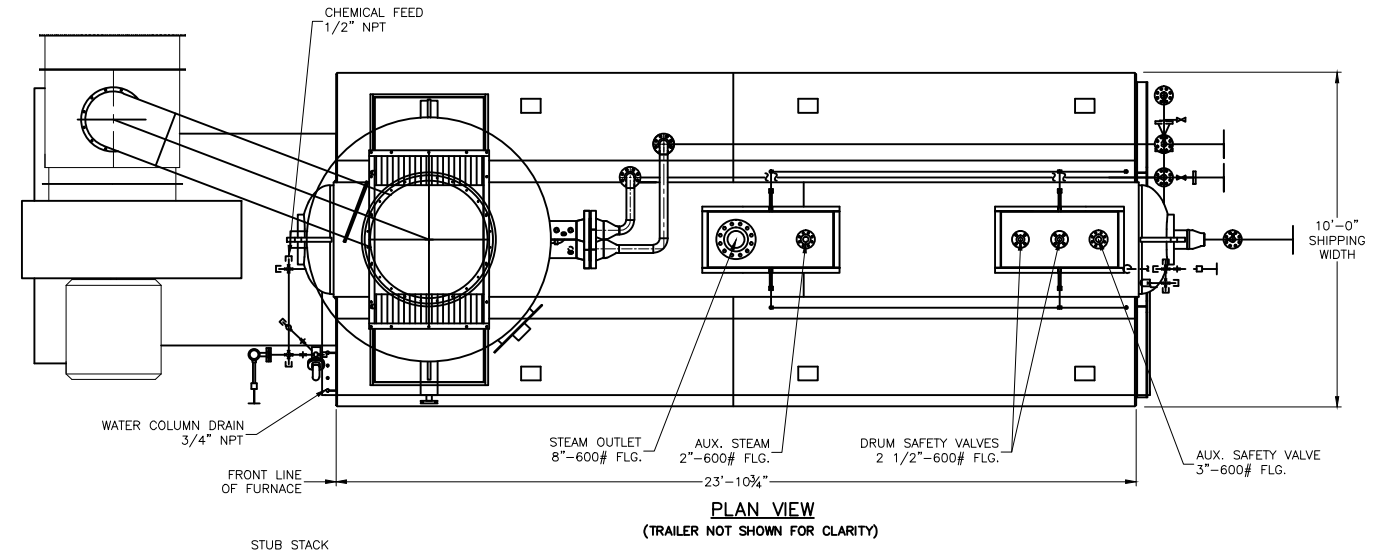
| | |
|--------------------|---------------|
| BOILER AND TRAILER | — 106,600 LBS |
| ECONOMIZER | — 14,000 LBS |

FLOODED WEIGHT:

| | |
|--------------------------|---------------|
| BOILER, ECON AND TRAILER | — 150,600 LBS |
|--------------------------|---------------|

CONNECTIONS

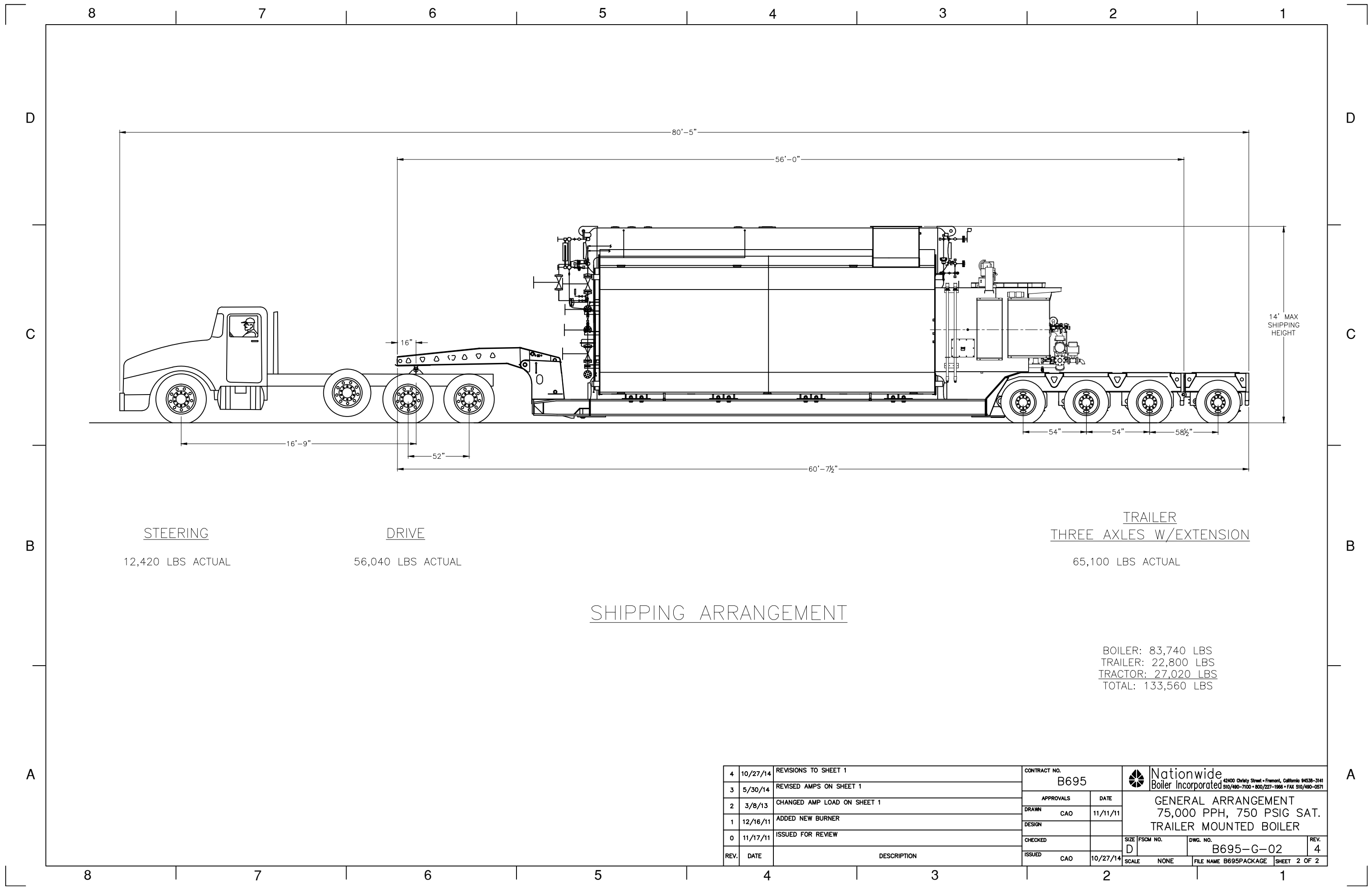
| | |
|-------------------------|------------------|
| CB - CONT. BLOWDOWN | 3/4" NPT |
| FO - FUEL OIL SUPPLY | 1" NPT |
| AS - ATOMIZING STEAM | 1" NPT |
| NG - NATURAL GAS | 4"-150# R.F. |
| I - INT. BLOWDOWN | 1 1/2"-600# R.F. |
| S - STEAM | 8"-600# R.F. |
| FW - FEEDWATER INLET | 2 1/2"-600# R.F. |
| CF - CHEMICAL FEED | 1/2" NPT |
| IA - INSTRUMENT AIR | 1/2" NPT |
| WC - WATER COLUMN DRAIN | 3/4" NPT |



- NOTES:**
- UNIT TO BE COMPLETELY DRAINED PRIOR TO SHIPMENT.
 - GOOSE NECK AND RUNNING GEAR ARE REMOVABLE.
 - 4TH AXLE ARE REMOVED FOR CLARITY.
 - FUEL OIL SKID NOT SHOWN BUT PROVIDED IF FIRING BOILER ON OIL.

| | | | | |
|------|----------|---|----------------------|---|
| 4 | 10/27/14 | REVISED FUEL CONSUMPTION AND EMISSIONS | CONTRACT NO. B695 | 42400 Christy Street • Fremont, California 94538-3141 510/480-7100 • 800/227-1986 • FAX 510/480-0571 |
| 3 | 5/30/14 | REVISED AMPS | APPROVALS | |
| 2 | 3/8/13 | INCREASED AMP LOAD FROM 125. | DATE | 11/11/11 |
| 1 | 12/16/11 | ADDED NEW BOILER, BURNER AND ECONOMIZER DETAILS | DRAWN | CAO |
| 0 | 11/17/11 | ISSUED FOR REVIEW | DESIGN | |
| REV. | DATE | DESCRIPTION | CHECKED | |
| | | | ISSUED | CAO 10/27/14 |

| | | | |
|-------|----------|-----------|-------------|
| SIZE | FSCM NO. | DWG. NO. | REV. |
| D | | B695-G-02 | 4 |
| SCALE | NONE | FILE NAME | B660PACKAGE |
| | | SHEET | 1 OF 2 |




STEERING
12,420 LBS ACTUAL

DRIVE
56,040 LBS ACTUAL

TRAILER
THREE AXLES W/EXTENSION
65,100 LBS ACTUAL

SHIPPING ARRANGEMENT

BOILER: 83,740 LBS
TRAILER: 22,800 LBS
TRACTOR: 27,020 LBS
TOTAL: 133,560 LBS

| | | | | |
|------|----------|-----------------------------|----------------------|---|
| 4 | 10/27/14 | REVISIONS TO SHEET 1 | CONTRACT NO. B695 |  Nationwide Boiler Incorporated <small>42400 Christy Street • Fremont, California 94538-3141 510/490-7100 • 800/227-1966 • FAX 510/490-0571</small> |
| 3 | 5/30/14 | REVISED AMPS ON SHEET 1 | APPROVALS | |
| 2 | 3/8/13 | CHANGED AMP LOAD ON SHEET 1 | DRAWN CAO | DATE 11/11/11 |
| 1 | 12/16/11 | ADDED NEW BURNER | DESIGN | |
| 0 | 11/17/11 | ISSUED FOR REVIEW | CHECKED | |
| REV. | DATE | DESCRIPTION | ISSUED CAO | 10/27/14 |

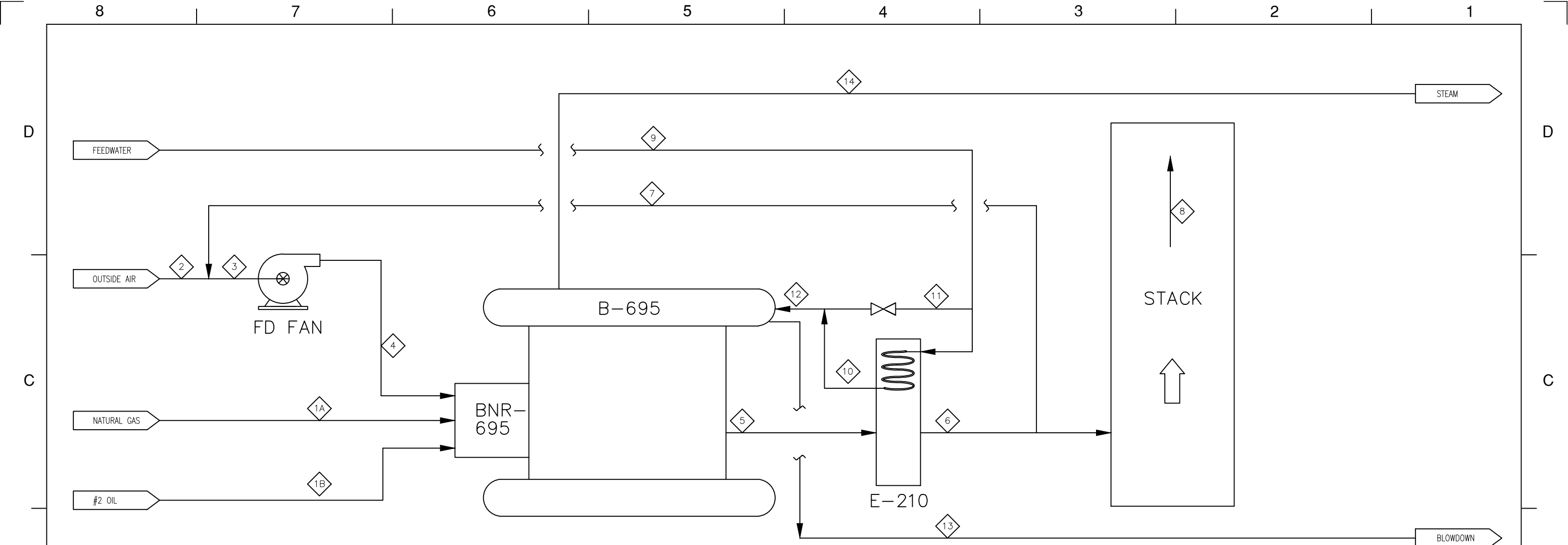
| | | | |
|-------|----------|-------------|--------------|
| SIZE | FSCM NO. | DWG. NO. | REV. |
| D | | B695-G-02 | 4 |
| SCALE | NONE | FILE NAME | SHEET 2 OF 2 |
| | | B695PACKAGE | |

| L E G E N D | | L E G E N D | | L E G E N D | | L E G E N D | | L E G E N D | | L E G E N D | |
|---|--|--------------------------------|--|---------------------------------|---------------------------|--|--|-----------------------------------|-------------------------------|-------------|--|
| GENERAL SYMBOLS | | | SELF-ACTUATED REGULATOR SYMBOLS | | | ACTUATOR SYMBOLS | | | INSTRUMENT DESIGNATION | | |
| | CONTINUATION FLAG; M-2-DRAWING NUMBER | | CONTROL VALVE (GENERAL SYMBOL) | | ELECTRIC MOTOR | INSTRUMENT SHALL BE IDENTIFIED BY A SYSTEM OF LETTERS AND NUMBERS AS FOLLOWS: A. IDENTIFICATION LETTERS SHALL BE PER TABLE SHOWN BELOW B. ID NUMBER SHALL BE UNIQUE THE INSTRUMENT DESIGNATIONS SHALL BE: PROCESS VARIABLE (FIRST LETTER) READOUT OR PASSIVE FUNCTION (SUCCEEDING LETTER) OUTPUT FUNCTION (SUCCEEDING LETTER) ID NUMBER | | | | | |
| | EQUIPMENT IDENTIFICATION EQUIPMENT NUMBER | | PRESSURE REDUCING REGULATOR, SELF-CONTAINED | | MODULATING ELECTRIC MOTOR | | | | | | |
| | BREAK POINT INTERFACE BETWEEN VENDOR SKID MOUNTED SCOPE OF SUPPLY AND INTERCONNECTING PIPING | | PRESSURE REDUCING REGULATOR WITH EXTERNAL PRESSURE TAP | | SOLENOID | | | | | | |
| | LOCALLY MOUNTED | PRIMARY ELEMENT SYMBOLS | | | | | | | | | |
| | PANEL MOUNTED | | ORIFICE PLATE | P&ID IDENTIFICATION | | | | | | | |
| | MOUNTED INTERNAL TO CONTROL PANEL | | PROPELLER METER | EQUIPMENT IDENTIFICATION | | | | | | | |
| INSTRUMENT FOR SINGLE MEASURED VARIABLE SYMBOLS | | | PIPING AND APPURTENANCE SYMBOLS | | | ABBREVIATION | | PROCESS PIPING DESIGNATION | | | |
| (SYMBOL SIZE MAY VARY ACCORDING TO SIZE AND TYPE OF DOCUMENT) | | | REDUCER | | | A | | BOILER FEEDWATER | | | |
| ELECTRIC MOTOR DRIVE | | | WYE STRAINER WITH BLOW-OFF VALVE AND PLUG | | | B | | CONTINUOUS BLOWDOWN | | | |
| POWER CORD TO 110V AC RECEPTACLE | | | STEAM OR LIQUID TRAP | | | BNR | | CHEMICAL FEED | | | |
| RELATED ELECTRICAL AND CONTROL SYMBOLS | | | DAMPER OR LOUVER | | | BT | | CONDENSATE | | | |
| INTERLOCK LOGIC | | | PILOT | | | CIP | | CITY WATER | | | |
| ELECTRIC MOTOR DRIVE | | | INJECTOR OR EDUCTOR | | | FI | | DRAIN | | | |
| 120V AC | | | PIPING MATERIAL CLASS CHANGE | | | FS | | DIGESTER GAS | | | |
| INSTRUMENT LINE SYMBOLS | | | AIR DAMPER | | | M | | FEEDWATER | | | |
| INSTRUMENT AIR (PNEUMATIC) | | | DESUPERHEATER | | | P | | INSTRUMENT AIR | | | |
| MECHANICAL LINK | | | EQUIPMENT SYMBOLS | | | S | | NATURAL GAS | | | |
| ELECTRIC SIGNAL | | | (VERTICAL) | | | SC | | PROPANE | | | |
| CAPILLARY TUBE | | | FAN OR BLOWER | | | SP | | STEAM | | | |
| HYDRAULIC (WATER OR OIL) | | | MIXER OR AGITATOR | | | T | | VENT | | | |
| BY N.B.I. | | | ACCUMULATORS, RECEIVERS, PRESSURE VESSELS | | | V | | | | | |
| VALVE SYMBOLS | | | ATMOSPHERIC TANK | | | | | | | | |
| SWING CHECK VALVE | | | CENTRIFUGAL PUMP | | | | | | | | |
| STOP CHECK ANGLE VALVE (NON-RETURN) | | | FILTER/SILENCER | | | | | | | | |
| ANGLE VALVE | | | METERING PUMP | | | | | | | | |
| MAKE-UP LEVEL CONTROL OR FLOAT VALVE | | | SAMPLE COOLER | | | | | | | | |
| PRESSURE SAFETY, RELIEF OR SAFETY-RELIEF VALVE | | | | | | | | | | | |
| GATE VALVE | | | | | | | | | | | |
| GLOBE VALVE | | | | | | | | | | | |
| PLUG VALVE | | | | | | | | | | | |
| NEEDLE VALVE | | | | | | | | | | | |
| BALL VALVE | | | | | | | | | | | |
| NORMALLY CLOSED VALVE | | | | | | | | | | | |
| MANUAL OPERATED FUEL CONTROL VALVE | | | | | | | | | | | |
| COUPLING | | | | | | | | | | | |
| DIAPHRAGM VALVE | | | | | | | | | | | |
| BUTTERFLY VALVE | | | | | | | | | | | |

| IDENTIFICATION LETTERS PER ISA STANDARD ISA-5.1-1984 (R 1992) | | | | |
|---|--------------------------------|-----------------------------|--------------------------|--|
| FIRST-LETTER | | SUCCEEDING-LETTERS | | |
| MEASURED OR INITIATING VARIABLE | MODIFIER | READOUT OR PASSIVE FUNCTION | OUTPUT FUNCTION | MODIFIER |
| A | ANALYSIS | | ALARM | |
| B | BURNER, COMBUSTION | | USER'S CHOICE | USER'S CHOICE |
| C | CONDUCTIVITY | | | CONTROL |
| D | DENSITY, (MASS) | DIFFERENTIAL | | |
| E | VOLTAGE | | SENSOR (PRIMARY ELEMENT) | |
| F | FLOW RATE | RATIO (FRACTION) | | |
| G | GAUGING (DIMENSIONAL) | | GLASS, VIEWING DEVICE | |
| H | HAND (MANUALLY INITIATED) | | | HIGH |
| I | CURRENT (ELECTRICAL) | | INDICATE | |
| J | POWER | SCAN | | |
| K | TIME, TIME SCHEDULE | TIME, RATE OF CHANGE | | CONTROL STATION |
| L | LEVEL | | LIGHT (PILOT) | LOW |
| M | MOISTURE, HUMIDITY | MOMENTARY | | MIDDLE, INTERMEDIATE |
| N | USER'S CHOICE | | USER'S CHOICE | USER'S CHOICE |
| O | USER'S CHOICE | | ORIFICE, RESTRICTION | |
| P | PRESSURE, VACUUM | | POINT (TEST) CONNECTION | |
| Q | QUANTITY, EVENT | INTEGRATE, TOTALIZE | INTEGRATOR | INTEGRATOR |
| R | RADIATION | | RECORD | |
| S | SPEED, FREQUENCY | SAFETY | | SWITCH |
| T | TEMPERATURE | | | TRANSMIT |
| U | MULTIVARIABLE | | MULTIFUNCTION | MULTIFUNCTION |
| V | VIBRATION, MECHANICAL ANALYSIS | | | VALVE, DAMPER, LOUVER |
| W | WEIGHT, FORCE | | WELL | |
| X | UNCLASSIFIED | X AXIS | UNCLASSIFIED | UNCLASSIFIED |
| Y | EVENT, STATE OR PRESENCE | Y AXIS | | RELAY, COMPUTE, CONVERT |
| Z | POSITION, DIMENSION | Z AXIS | | DRIVER, ACTUATOR, UNCLASSIFIED FINAL CONTROL ELEMENT |

| | | | | | |
|--------------|--|-----------------------|--|---|--|
| CONTRACT NO. | | B695 | | <small>42400 Christy Street • Fremont, California 94538-3141</small> <small>510/490-7100 • 800/227-1966 • FAX 510/490-0571</small> | |
| APPROVALS | | DATE | | MECHANICAL LEGENDS | |
| DRAWN | | 11/11/11 | | | |
| DESIGN | | | | | |
| CHECKED | | | | SIZE FSCM NO. | |
| ISSUED | | | | DWG. NO. B695-L-03 | |
| | | | | REV. 1 | |
| SCALE NONE | | FILE NAME B695PACKAGE | | SHEET 1 OF 1 | |

| REV. | DATE | DESCRIPTION |
|------|----------|-------------------|
| 1 | 1/13/12 | AS-BUILT |
| 0 | 11/17/11 | ISSUED FOR REVIEW |



| ITEM \ STREAM NO. | | 1A | 1B | 2 | 3 | 4 | 5 | 6 | 7 | 8 | 9 | 10 | 11 | 12 | 13 | 14 |
|-------------------|---------------|-------------|----------|----------------|------------|------------|------------|------------|------------|------------|-----------|-----------|-------------------|-----------|---------------------|--------|
| DESCRIPTION | | NATURAL GAS | #2 OIL | COMBUSTION AIR | MIX AIR | MIX AIR | FLUE GAS | FLUE GAS | FGR | FLUE GAS | FEEDWATER | FEEDWATER | ECONOMIZER BYPASS | FEEDWATER | CONTINUOUS BLOWDOWN | STEAM |
| UNITS | FLOW PRESSURE | SCFH PSIG | GPH PSIG | ACFM IN.WC | ACFM IN.WC | ACFM IN.WC | ACFM IN.WC | ACFM IN.WC | ACFM IN.WC | ACFM IN.WC | GPM PSIG | GPM PSIG | GPM PSIG | GPM PSIG | GPM PSIG | PSIG |
| FLOW | SEE UNITS | 94,000 | 660 | 17,930 | 23,720 | 23,000 | 47,295 | 36,350 | 5,580 | 30,845 | 162 | 170 | 0 | 170 | 5.7 | --- |
| MASS FLOW | LB/HR | 4,310 | 4,615 | 78,145 | 92,990 | 92,990 | 97,300 | 97,300 | 14,845 | 82,455 | 77,250 | 77,250 | 0 | 77,250 | 2,250 | 75,000 |
| TEMPERATURE | 'F | 80 | 80 | 80 | 131 | 140 | 650 | 390 | 390 | 390 | 227 | 316 | 227 | 316 | 502 | 502 |
| PRESSURE | SEE UNITS | 15 | 175 | 0 | -2 | 17.2 | 2.0 | 1.0 | -2 | 0 | 725 | 715 | 715 | 695 | 675 | 675 |

- ASSUMPTIONS:
- 1.) CONTINUOUS BLOWDOWN IS 3%
 - 2.) NATURAL GAS HHV IS 1,000 BTU/SCF
 - 3.) FGR RATE IS 18% MAX

| | | | |
|----------------------|----------|--|------------------|
| CONTRACT NO. B695 | | Nationwide Boiler Incorporated <small>42400 Christy Street • Fremont, California 94538-3141 510/490-7100 • 800/227-1986 • FAX 510/490-0571</small> | |
| APPROVALS | DATE | PROCESS FLOW DIAGRAM 75,000 PPH, 750 PSIG SAT. | |
| DRAWN CAO | 11/11/11 | SIZE D | FSCM NO. NONE |
| DESIGN | | DWG. NO. B695-F-04 | REV. 1 |
| CHECKED | | FILE NAME B695PACKAGE | SHEET 1 OF 1 |
| ISSUED | | | |
| REV. | DATE | DESCRIPTION | |
| 1 | 1/13/12 | AS-BUILT | |
| 0 | 11/17/11 | ISSUED FOR REVIEW | |

8 7 6 5 4 3 2 1

OP-412
OIL PUMP
5 HP, 460 V, 3Ø

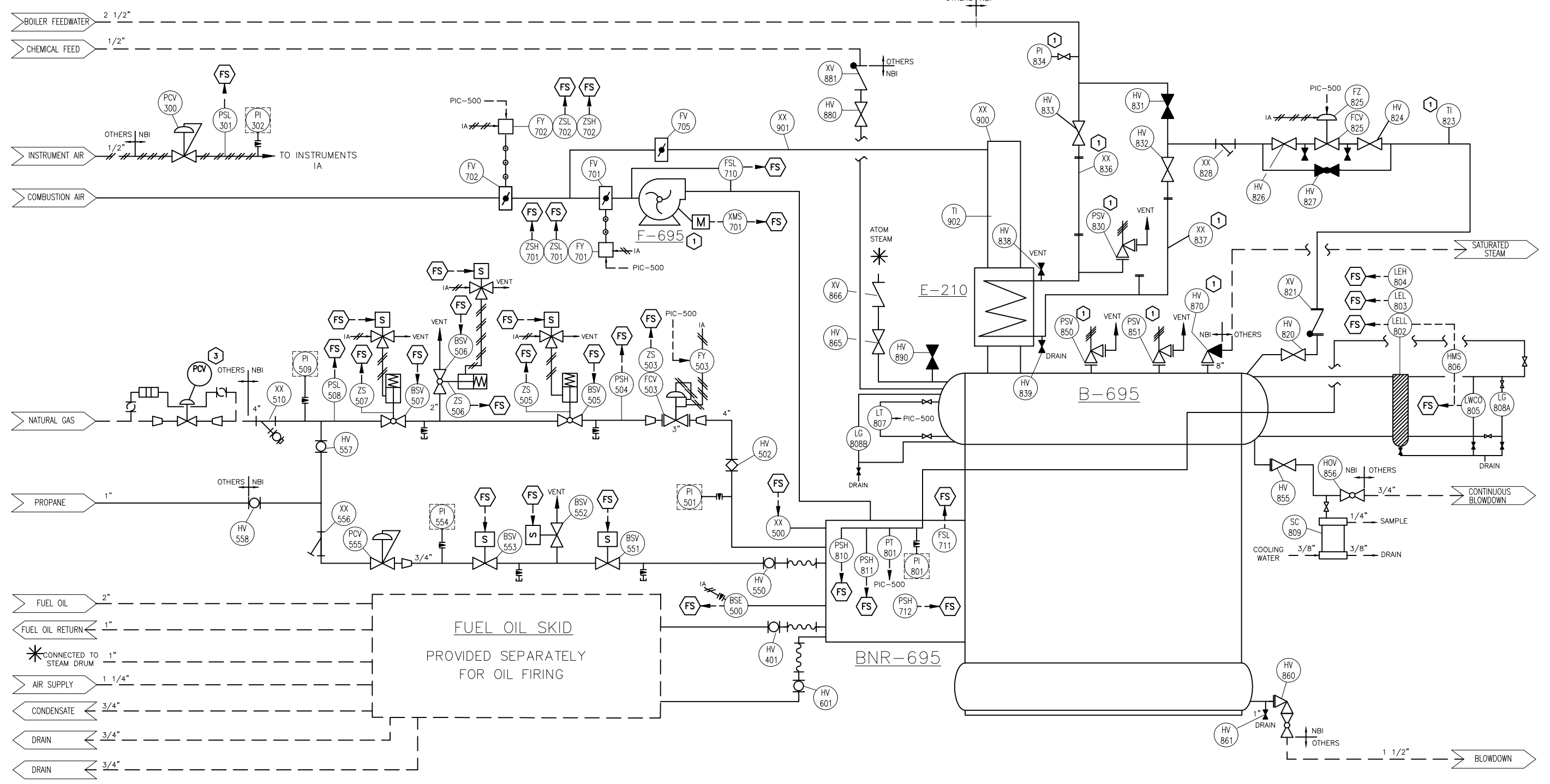
FM-695
125 HP @ 460V, 3Ø, 60HZ

F-695
CENTRIFUGAL FAN
27,913 ACFM
@ 18.4 IN. H₂O

BNR-695
FABER LOW-NO_x BURNER
109 MMBTUH NATURAL GAS
99 MMBTUH #2 OIL

B-695
BABCOCK & WILCOX FMO-66 BOILER
75,000 PPH
@ 750 PSIG DESIGN PRESSURE

E-210
AHR ECONOMIZER
6.7 MMBTUH HEAT EXCHANGED



LEGEND

- FS** - FLAME SAFETY SYSTEM CONNECTION
- 1** - INSTRUMENT SHIPPED LOOSE TO BE MOUNTED AND/OR WIRED TO CONTROL PANEL BY OTHERS.
- 2** - INSTRUMENT MOUNTED ON SEPARATE SKID AND WIRED TO CONTROL PANEL BY OTHERS.
- 3** - INSTRUMENT SUPPLIED AND INSTALLED BY OTHERS.

***NOTES**

- 1.) COMBUSTION CONTROLS ARE PARALLEL POSITIONING.
- 2.) COMBUSTION CONTROLLER IS A MOORE MODEL 353. (PIC 500)
- 3.) FEEDWATER CONTROLLER IS A MOORE MODEL 353. (PIC 500)

| REV. | DATE | DESCRIPTION |
|------|----------|------------------------------|
| 2 | 1/13/12 | AS-BUILT |
| 1 | 12/16/11 | UPDATED WITH VENDOR DRAWINGS |
| 0 | 11/17/11 | ISSUED FOR REVIEW |

| | | |
|-----------------------------|----------|---|
| CONTRACT NO. B695 | | Nationwide Boiler Incorporated 42400 Christy Street • Fremont, California 94538-3141 510/490-7100 • 800/227-1966 • FAX 510/490-0571 |
| APPROVALS | DATE | |
| DRAWN CAO | 11/11/11 | PIPING & INSTRUMENT DIAGRAM 75,000 PPH, 750 PSIG SAT. |
| DESIGN | | |
| CHECKED | | SIZE FSCM NO. |
| ISSUED | | DWG. NO. B695-1-05 |
| | | SCALE NONE |
| | | FILE NAME B695PACKAGE |
| | | SHEET 1 OF 1 |

8 7 6 5 4 3 2 1