

THE NATIONWIDE BOILER STEAMLINES

DECEMBER 2025



NATIONWIDE'S 200K 'WORLD BOILER' DELIVERS WORLDWIDE IN 2025

This year, Nationwide Boiler continued to demonstrate why our 200,000 lb/hr B&W FM120-124 package watertube boiler has earned the nickname "The World Boiler." Known for its versatility and reliability, this unit is a cornerstone of our in-stock inventory. Designed for 750 psi / 750°F superheat, it delivers the performance needed for demand-

ing applications worldwide.



In 2025, three of these massive units were shipped to meet critical customer needs. Earlier this fall, we announced

the sale of the first in-stock 200,000 lb/hr boiler package to a major refinery in the Middle East, highlighting the global demand for dependable steam solutions and Nationwide Boiler's ability to deliver overseas.

In addition, we provided our second 200K stock boiler for a long-term

rental to one of our valued pulp and paper customers in Alabama, ensuring reliable steam for their operations. And, when a paper facility on the East Coast faced an urgent need, we stepped up with a quick-turnaround sale of a previously sold unit that became available earlier this year.

The rapid response and follow-through on these installations demonstrate our commitment to solving customer challenges—fast. This success reflects the strength of our inventory strategy and the confidence customers place in Nationwide Boiler. Whether for rental or sale, our 200,000 lb/hr "World Boiler" continues to set the standard for performance and reliability worldwide. It's a reminder that having the right equipment in stock can make all the difference when timing is critical.

As we close out 2025, we are proud of the milestones achieved and the partnerships strengthened throughout the year. From global shipments to rapid-response solutions, our team has worked tirelessly to uphold the values

WHAT'S INSIDE

PAGE 2

A Message from our President

NBI News Briefs

Women in the Boiler Industry Event

NBI Employee Spotlight

PAGE 4

Boiler Procurement, Redefined

Two Projects, One Commitment

Burner Management & Safety PLCs

NBI Partner Spotlight

PAGE 6

Holiday Highlights

New Used Boilers In Stock

Upcoming Events

Spotted on Socials



that define Nationwide Boiler: reliability, innovation, and customer-first service.

"...INTEGRITY, DEPENDABILITY, REAL CUSTOMER SERVICE."



LOOKING BACK, MOVING UP: A BRIGHT NEW YEAR IS AHEAD

As we wrap up 2025, it's a great time to reflect on the progress we've made and the opportunities ahead. This year brought its share of challenges and triumphs, and through it all, the Nationwide Boiler team continued to deliver on our promise of reliability and service.

On the rental side, we saw strong demand throughout the year, reinforcing the value of our fleet and the trust our customers place in us. Toward the end of the year, we closed multiple major boiler sales—including two domestic projects and one international shipment—along with several other notable equipment transactions. While the first part of the year presented some hurdles for sales, our team's persistence and adaptability paid off in the end.

Beyond the numbers, 2025 marked an important milestone for Nationwide Boiler: we reached an all-time high in headcount. Growth brings new energy and ideas, and we're excited to continue building a team that can take us into new markets and seize emerging opportunities. Expansion isn't just about size—it's about staying agile, innovative, and ready for what's next.

One topic that's been on my mind lately is complacency. Success can sometimes lead to comfort, and comfort can lead to missed opportunities. As we move into 2026, I want this to be top of mind for all of us. Let's challenge ourselves to think bigger, act faster, and never settle for "good enough." Our industry is evolving, and so must we.

Looking ahead, we see tremendous potential in areas like emissions compliance, advanced controls, and rapid-delivery solutions. These aren't just trends—they're opportunities to lead. By continuing to invest in technology, strengthen partnerships, and prioritize customer success, we can ensure Nationwide Boiler remains a trusted name for decades to come.

Thank you to every member of the Nationwide Boiler team for your hard work and dedication this year. And thank you to our customers and partners for trusting us to deliver solutions that keep your operations running. Here's to a new year filled with growth, innovation, and continued success.

Lucy

NBI NEWS BRIEFS



Employee News



Nationwide Boiler is excited to welcome Lucas Nguyen to the team! Lucas joins us as a Controls Engineer at our Alvin, Texas facility. With his technical expertise and passion for innovation, Lucas will play a key role in supporting advanced boiler control systems and ensuring reliable solutions for our customers.

We'd also like to congratulate Chelsey Ryker on her recent promotion to Director of Marketing & Communications! Chelsey has been an integral part of Nationwide Boiler since 2006, and this new role reflects her continued dedication and leadership within the company. Want to learn more about Chelsey's journey and contributions? Check out her Employee Spotlight below.

Nationwide Feature in Today's Boiler

Nationwide Boiler was recently featured in Today's Boiler Magazine with an article titled "Future-Proofing Emissions Compliance: Why NOx Optimization Is the Next Step." Written by David Spain and Jim Lieskovan, the piece explores how tightening air quality regulations are pushing facilities to move beyond basic compliance and adopt proactive strategies for long-term success.



The article highlights why optimizing burner design and emissions controls today can help facilities avoid costly retrofits tomorrow, while ensuring flexibility to meet future standards. If you're planning a new installation or emissions upgrade, this is a must-read for staying ahead of regulatory changes.

Learn more in the latest edition of [Today's Boiler](#).

Save the Date: 2026 Charity Golf Tournament



Mark your calendars! Nationwide Boiler's Annual Pebble Beach Charity Golf Tournament will take place May 6–7, 2026. This year's event includes accommodations at The Lodge at Pebble Beach, a practice round at Spyglass Hill, and tournament round at the Pebble Beach Golf Links—one of the most iconic courses in the world.

In 2025 we raised over \$71,000 and we're aiming even higher next year! Stay tuned for registration details and sponsorship opportunities.

SUPPORTING THE FIRST 'WOMEN IN BOILER INDUSTRY' SYMPOSIUM

Nationwide Boiler was proud to join the inaugural Women in the Boiler Industry (WIBI) Symposium, held October 15–17, 2025, in Minneapolis, MN. Hosted by the American Boiler Manufacturers Association (ABMA), this two-day event united professionals across North America to celebrate diversity, foster connections, and drive the future of the boiler industry. Nationwide Boiler sponsored the Welcome Networking Reception, with Chelsey Ryker representing our team and serving on the WIBI Advisory Committee.



The symposium featured a dynamic mix of technical sessions, leadership workshops, and networking opportunities. Attendees explored topics such as NBIC Part 2 code updates, boiler safety best practices, and energy efficiency strategies during plant tours. Leadership-focused sessions tackled communication skills, financial management, and negotiating with confidence, while technology tracks introduced AI-driven tools for marketing and productivity. These sessions provided actionable insights for professionals at every stage of their careers, blending technical expertise with personal development.

Beyond the classroom, WIBI created space for meaningful conversations and collaboration. Fireside chats, networking luncheons, and interactive roundtables encouraged attendees to share experiences and build lasting connections. A highlight of the event was the boiler room tours, giving attendees a firsthand look at real-world operations and modern efficiency practices

in action. These tours offered a valuable perspective on how theory translates into practice, reinforcing the importance of safety and innovation in everyday plant environments.



The event closed with a leadership panel and an awards ceremony honoring trailblazers and rising stars—an inspiring reminder of the talent shaping the boiler industry's future. Among the honorees was Nancy Simoneau, President of NBI partner, Le Groupe Simoneau, who received recognition for her outstanding leadership and contributions to advancing women in the boiler industry. Her work exemplifies the innovation and integrity that WIBI seeks to celebrate.



Events like this strengthen our industry by amplifying diverse voices and fostering innovation, and we are proud to play a small part. We look forward to continuing this momentum and supporting initiatives that create opportunities for all.

NBI EMPLOYEE SPOTLIGHT: CHELSEY RYKER



Chelsey Ryker's story is closely tied to Nationwide Boiler and our headquarters, located in Fremont, California.

Born and raised just blocks from the office, Chelsey began her journey with the company at the end of her junior year of high school, assisting as the backup receptionist and with administrative tasks. What started as a temporary role quickly grew into accounting support, special events, and a variety of interdepartmental projects.

Chelsey embraced the variety of her work, enjoying opportunities to collaborate across departments. From creating equipment manuals and maintaining boiler records to learning the ins and outs of sales and marketing, her role evolved as she took on new challenges.

Over the years, Chelsey has worn many hats—event coordination, SEO, graphic design, rentals and sales, project management, and even IT support—building a deep understanding of the business along the way.

Recently, Chelsey was promoted to Director of Marketing & Communications, where she manages brand strategy, digital marketing, internal communications, marketing opera-



tions, and company-wide IT initiatives. Her professional goals include strengthening her leadership skills, improving internal processes, and implementing modern tools to streamline operations.

Outside of work, Chelsey loves being a mom and spending time with her two boys, watching their interests grow. Cheerleading has also been a significant part of her life, and while she isn't currently coaching, Chelsey hopes to return to it in the future. Fun fact: she is known for the signature "Chelsey Pose"—hand on hip—coined by Larry Day at the office, a habit that came from her cheer days. It's become an inside joke among the team, when photos are taken at company events.

Chelsey's journey from high school hire to Director of M&C reflects her adaptability, dedication, and the value she brings to Nationwide Boiler.

BOILER PROCUREMENT REDEFINED WITH IN-STOCK BOILERS

Nationwide Boiler has offered an In-Stock Boiler Program for years, helping customers eliminate long lead times and keep projects on schedule. Now, we're amplifying that message with a new campaign: Boiler Procurement Redefined—because speed, flexibility, and confidence matter now more than ever.

When your facility faces a tight project schedule, an unexpected outage, or a critical equipment need, waiting up to 54 weeks for a new watertube boiler isn't an option. That's why our inventory includes factory-tested, pre-engineered fire-tube and watertube boilers—new, used, and reconditioned—ready to ship when you are. We also stock essential auxiliary equipment to make planning simple and stress-free.



Each unit comes with detailed documentation—photos, drawings, performance data—and even the option for a pre-purchase inspection, making planning simple and stress-free. Plus, our program offers flexibility in the procurement path that fits your unique needs: (1) Purchase for permanent installation, (2) rent for short-term requirements, and (3) lease-to-own or “try before you buy”.

Every option is backed by our experienced team and includes solutions to meet stringent NOx and CO emissions standards. With nearly 60 years of expertise, we deliver more than equipment—we provide confidence, speed, and peace of mind.

Boiler procurement isn't new. But the way we do it? That's redefined.



TWO PROJECTS, ONE COMMITMENT ULTRA-LOW EMISSIONS PERFORMANCE

Earlier this year, Nationwide Boiler completed two major boiler projects for leading food producers in California—both proving how the right steam solution can boost capacity, cut emissions, and deliver long-term value. With tightening air quality regulations and growing production demands, these customers needed dependable systems that could perform without compromise. The results? They didn't just meet expectations—they exceeded them.

The first project featured a custom 300 HP, 150 psig Hurst firetube boiler equipped with an Oilon ultra-low NOx burner. To modernize the customer's aging steam plant, we also supplied a new feedwater system and blowdown separator for improved stability and efficiency. During compliance testing, the boiler achieved standout emissions performance: just 3.1 ppm NOx and under 2 ppm CO, corrected to 3% O₂. The system delivered a 3:1 turndown ratio, with enhancements underway to expand that to 4:1 for even greater flexibility as production needs fluctuate.

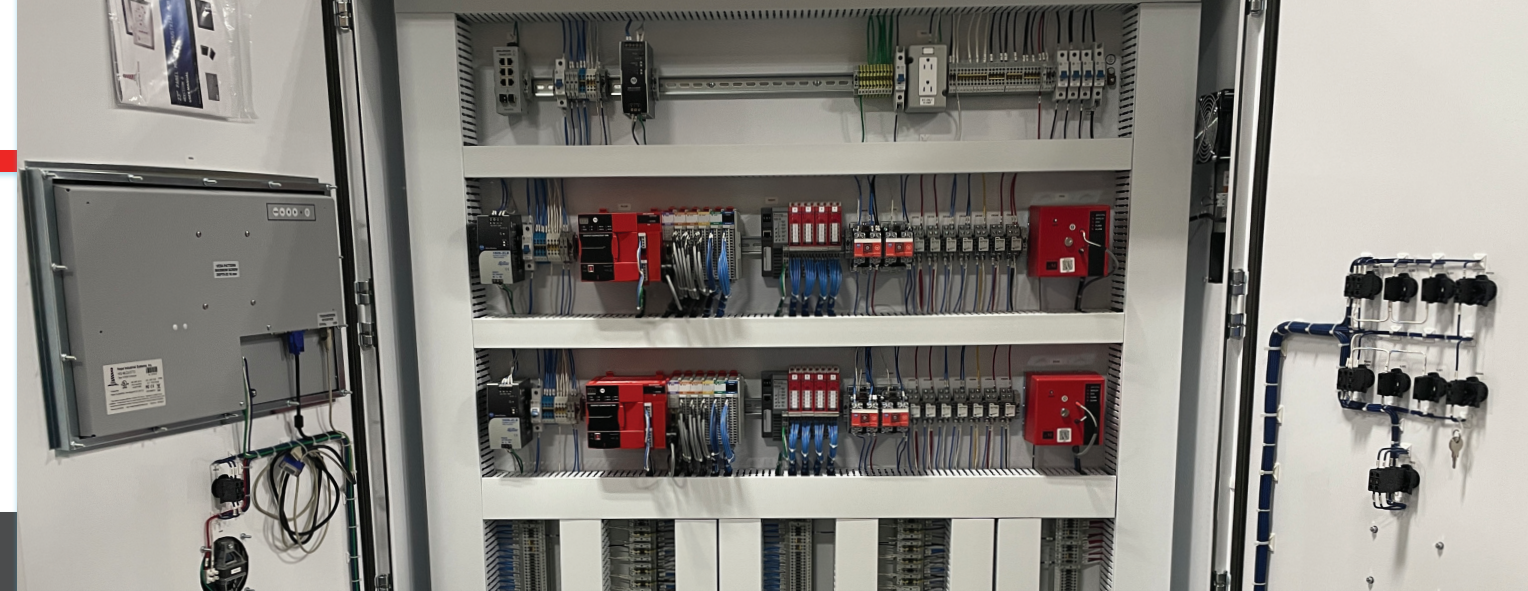


The second project involved an in-stock 180,000 lb/hr Babcock & Wilcox watertube boiler paired with our CataStak™ Selective Catalytic Reduction (SCR) sys-

tem. Known for delivering single-digit NOx, the CataStak exceeded expectations again—recording less than 1.5 ppm NOx, under 1 ppm CO, and under 3 ppm ammonia slip (corrected to 3% O₂). These results surpass the state's toughest air district requirements, including future 2029 standards set by the San Joaquin Valley Air Pollution Control District. Along with full compliance, the system provides increased steam capacity and higher overall efficiency.



As California continues to lead the nation with aggressive emissions standards—and similar regulations spread nationwide—industrial facilities are seeking proven solutions that combine performance with regulatory confidence. These two projects showcase Nationwide Boiler's ability to deliver both custom-engineered systems and rapid-delivery equipment, ensuring reliable, emissions-compliant steam production without sacrificing availability or output.



BURNER MANAGEMENT: SAFETY IN EVERY SEQUENCE

At Nationwide Boiler, safety isn't just a requirement—it's the foundation of everything we do. That's why Burner Management Systems (BMS) play such a critical role in every boiler we rent, sell, or service. These systems ensure safe startup, shutdown, and operation, protecting both equipment and people.

For most applications, our Eagle Boiler Control System is the go-to solution. It combines a Fireye BurnerLogix flame safeguard for burner safety with an Allen-Bradley PLC for combustion control. This packaged approach is simple, cost-effective, and fully compliant with UL, FM, and NFPA-85 standards. The BurnerLogix controller handles all the essentials—purge timing, pilot ignition, flame detection, fuel valve proving, burner sequencing, and lockout management—making it ideal for straightforward boiler installations.

But what happens when the job isn't simple? As systems grow more complex, the need for flexibility and integration becomes clear. That's where our Eagle One+ steps in. Built on Allen-Bradley's Compact GuardLogix SIL3 safety plat-

form, this fully PLC-based BMS is designed for facilities with advanced safety requirements, multi-burner boilers or shared equipment. It allows custom sequencing, voting logic across multiple flame scanners, and seamless integration with plant automation—all while meeting NFPA 85 or NFPA 86 standards.

Why does this matter? In industries like chemical processing, power generation, and refining, safety standards often go beyond basic compliance. These facilities demand redundant safety architectures, fault tolerance, and detailed documentation for audits. PLC-based systems deliver all of that, plus the flexibility to adapt as processes evolve. They even make economic sense when multiple boilers share common equipment, reducing conflicts and ensuring safe coordination.

In short, packaged flame safeguard controls are perfect for standard applications, while PLC-based BMS solutions provide the advanced capabilities needed for complex or highly regulated environments. Choosing the right system isn't just about meeting code—it's about ensuring long-term safety, reliability, and peace of mind.

NATIONWIDE PARTNER SPOTLIGHT: LOCKE AMI

Nationwide Boiler is proud to spotlight Locke AMI, a trusted partner since 2012 serving customers throughout Kansas and Western Missouri. Based near Kansas City, Locke AMI brings more than four decades of experience to the boiler and power sectors, offering a full suite of services—from new boiler installations and outage support to repairs, retubes, and ongoing maintenance.

Originally founded in 1973 as Locke Equipment Sales Co., the company secured its ASME “S,” “U,” and “R” code stamps in 1982, launching its installation and repair services. A strategic merger with Associated Mechanical, Inc. in 2002—and later Bowen Engineering in 2018—helped form today's Locke AMI, delivering expanded capabilities and national reach.

Locke AMI's team combines over 250 years of collective experience in engineering, project management, and field supervision. Whether guiding a customized boiler installation from concept to commissioning, responding to emergency outages, or maintaining ongoing operations, their hands-on approach ensures every project is executed with technical precision and safety in mind.

LOCKE AMI
A **BOWEN** COMPANY

Nationwide Boiler values partners who share our commitment to integrity, customer satisfaction, and technical excellence. We're proud to work alongside Locke AMI and look forward to many more years of collaboration serving the region's needs for temporary and permanent steam and emissions compliance solutions.



HOLIDAY HIGHLIGHTS GIVING BACK AND CELEBRATING THE SEASON TOGETHER

The holiday season at Nationwide Boiler is more than a tradition—it's a reflection of who we are as a team. This year, we continued to celebrate the spirit of giving and togetherness across all three offices, with moments that remind us why these traditions matter.

Giving Back to Our Communities

Supporting our communities is something we take pride in every year. In Washougal, the team contributed 439 pounds of food and \$123 in cash to the Inter-Faith Treasure House, while our Alvin facility continued its tradition of supporting SoleAna Stables, a nonprofit providing equine-



assisted therapy for children with disabilities and injured veterans. In Fremont, employees filled three large bins with non-perish-

able items for the Alameda County Community Food Bank. Moving forward in the Fremont office, we plan to alternate between food and toy drives every other year.



And the giving doesn't stop with the holidays. In January, our Fremont team will participate in a meal-packing event for kids in need, and in May, we'll host our annual charity golf tournament, continuing our commitment to making a positive impact year-round.

Celebrating the Season Together

From California to Washington to Texas, our holiday parties brought employees together for laughter, good food, and festive fun. Each party featured employee gifts, milestone service awards, and plenty of laughter during the annual white elephant gift game. A special highlight was the annual recognition of two outstanding employees.

The Dick Bliss Award

Named after our founder, this award honors employees who embody integrity, dependability, and genuine customer service—the principles that have guided us since day one. Recipients don't just do their jobs; they set the standard. This year's honoree is Jack Valentine, who exemplifies these values through leadership and commitment.



The Self Award

This award represents the heart and soul of our shop team, honoring those who demonstrate reliability, pride in their craft, and a commitment to getting the job done right. This year's recipient is Chris Dickerson, recognized for his consistent contributions and technical expertise that help keep our controls shop running smoothly.



Holiday Spirit Around the Office

The week leading up to Christmas was all about creativity and camaraderie. Employees brought cheer to the office with theme days like Merry Morning Pajama Day, Tacky Tuesday, and Festive Friday. A special shout out to Brendan McNamee, who



joined the fun from our remote office—proof that team spirit knows no boundaries!

From giving back to celebrating together, these traditions remind us that the strength of Nationwide Boiler lies in our people—at work, in our communities, and beyond. Here's to carrying that spirit into 2026!



STOCK BOILER INVENTORY SPOTLIGHT

60 HP, 150 PSIG
Used Precision
Electric Steam Boiler

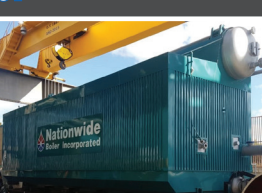
150 - 800 HP, 250 PSIG
New Hurst
Low or Ultra-Low NOx
Package FT Boilers

1200 HP, 250 PSIG
Used York-Shipley
Low NOx
Package FT Boiler

90,000 PPH, 950 PSIG
Reconditioned Victory
Low NOx Package WT Boiler

200,000 PPH, 750 PSIG / 750F
Used B&W, Low NOx
Package WT Boiler

**Additional boilers in-stock & in production, inquire within for more*



2026 UPCOMING EVENTS

ABMA Annual Meeting - Tucson, AZ
January 16 - 19

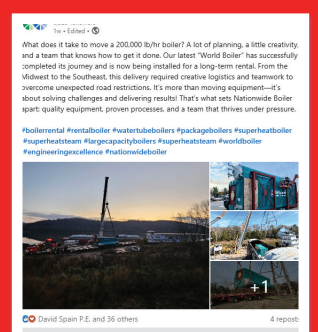
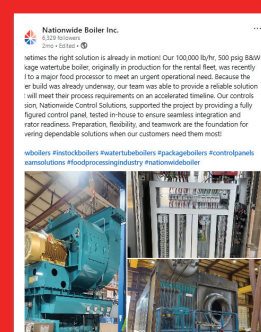
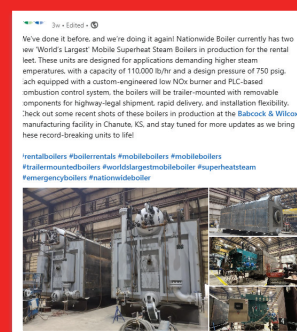
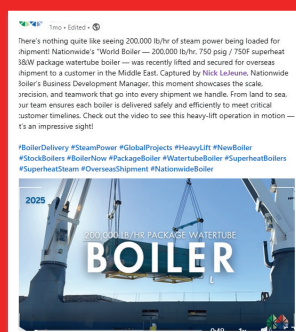
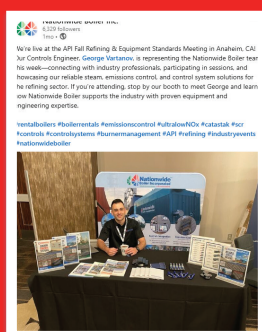
Food Processing Expo - Sacramento, CA
February 4 - 5

IDEA CampusEnergy 2026 - Washington, DC
February 17 - 20

Central Valley Facilities Expo - Lodi, CA
March 18 - 19

WRBA Conference - Tacoma, WA
March 24 - 26

BOILER Expo, Nashville, TN
March 31 - April 2



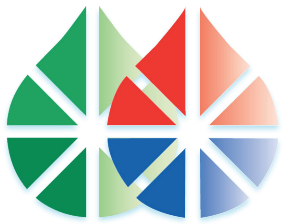
In Loving Memory



*Ron
Mullins*

November 7, 1956 - December 3, 2025

"Those we love never truly leave
us; their influence lives on in the
lives they touched."



THE NATIONWIDE BOILER

STEAMLINES

Headquarters

42400 Christy Street, Fremont, CA 94538

Visalia, CA - Washougal, WA - Alvin, TX - West Chester, PA

www.nationwideboiler.com | info@nationwideboiler.com



Copyright 2025 All Rights Reserved